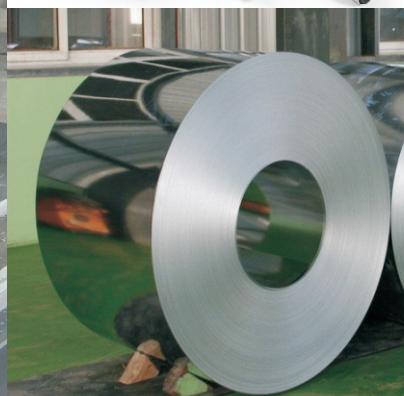
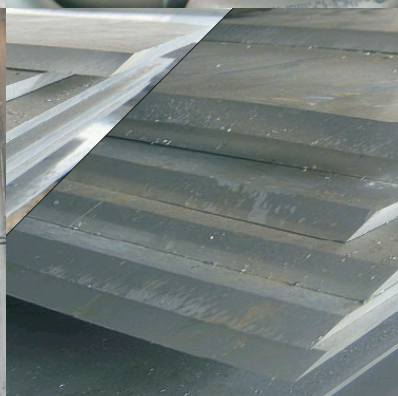
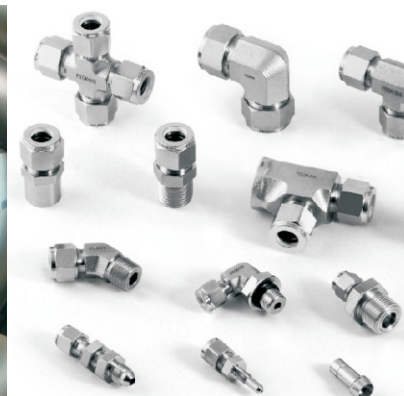




MACROTECH
STEEL INDUSTRIES



Expanding Our Professional Horizons



MACROTECH

STEEL INDUSTRIES

VINAY TIWARI
+91-83698 64458
BABU SOLANKI
+91-98198 50578
Email : macrotechsteel@gmail.com

We introduce ourselves as one of the leading Importers, Exporters, Stockist & Suppliers of Ferrous and Non-Ferrous Metal in form of Stainless Steel Bars, Wires, Pipes, Sheets, Coils, Plates, Forged and Pipe fittings. Having an experience of more than one decade in this field makes us leading exporters and domestic suppliers. Most of our clients are Government and Public sector companies like Chemical, Thermal Power, Nuclear Power, Heat Exchanger etc.

We are interested in expanding our professional horizons by seeking new challenges and are sure to contribute to the growth and success of your company / organization.

Words can not justify our enthusiasm, team building and ensuring competitive win. We believe in walking a mile in the shoes of the customer and treating them like we would like to be treated.

We request you to give us an opportunity to understand your requirement, and would be esteemed to serve you better.

Please feel free to contact us at : +91-83698 64458 / +91-98198 50578

You can also E-mail us at : macrotechsteel@gmail.com



STAINLESS STEEL BRIGHT BARS (PEELED/TURNED)

We, within a short span have become a major source for Stainless Steel Rolled / Forged / Peeled Rounds, Rcs, Blooms & Billets. We have huge stocks for our quality products which are supplied on time at lowest possible rates meeting most of our customer's requirement.

Product Range

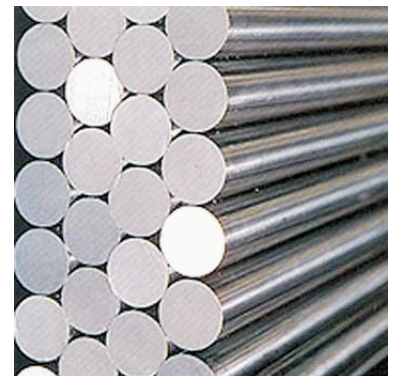
Condition	Peeled, Centreless & Polished	Peeled & Polished	Peeled (Rough Turned)	Forged, Rough Turned
Grades	201, 202, 301,303, 304, 304L, 310, 316, 316L, 321, 410, 416, 420, 430, 431, 430F & others		304, 304L, 316L, 410, 416, 420, 430	303, 304, 304L, 316, 316L, 410, 416, 420, 431
Diameter (Size)	20mm to 85mm (3/4" to 3-1/4")	85mm to 140mm (3-1/4" to 5-1/2")	25mm to 140mm (1 to 5-1/2")	150mm to 400mm (6" to 16")
Diameter /+3mmTolerance	h9 (Din 671) (ASTM A484 / A479 / A276)	h 11	K 12/K 13 (Din 1013)	-0mm to (-0" / +0.12")
Length	3/4/5,6/6 meter (12/14ft/20 feet)	3/4/5 6/6 meter (12/14ft/20 feet)	3/4/5,6/6 meter 10 feet, 16 feet	3 meter - 5 meter
Length Tolerance	-0/+200mm of + 100mm to + 50mm (-0"/1 feet or +4" or 2")	-0/+ 200mm or + 100mm or +50mm (-0"/+1 feet or +4" or 2")	-0/+ 100mm or 500mm (-0"/+3 feet or+2 feet)	-0/+2 meter - (-0/+6 feet)

Stainless Steel Wires

Diameter (Size)	Thick/Medium Wire -= 1 mm to 8mm (0.039" to 0.314")	
Grade	201, 202, 204Cu, 302, 302HQ, 303, 304, 304L, 304HC, 310, 316, 316L, 321, 304LER, 308LER, 316LER, 420, 430L	
Surface Finish	Matt, Bright Drawn, Bright Shiny, EPQ, Coated, De-coated.	
Diameter Tolerance	Diameter	Tolerance
	0.80 mm (0.0314") to < 1.50 mm (0.0590") 1.50 mm (0.0590") to < 2:00 mm (0.0787") 2.00 mm (0.0787") to < 4.00 mm (0.1574") 4.00 mm (0:1574") to < 6.00 mm (0.236")	+/-0.013 mm (0.0005") +/-0.013 mm (0.0006") +/-0.025 mm (0.0009") +/-0.030 mm (0.0011")
Tensile Strength	Type	Tensile in Kg/mm ²
	Soft 1/4 Hard 1/2 Hard Full Hard	60 - 75 75 - 90 90 - 140 140-200 or ASTM A313/Din 17224
Packing	<ul style="list-style-type: none"> - HDPE wrapped coils of 20 kg. to 250 kg. - Pattern laid coils on MS Carriers / spiders (200 Kg. to 1000 kg.) - Coils on wooden pallets (100 kg to 800 kg) - Cheese coils (500 kg -1000 kg) - Drum Packing - Fine wire in Spools from Din 80 to Din 250 	

Stainless Steel Bright Bars (Cold Drawn)

Condition	Cold Drawn and Polished	Cold Drawn, Center less Ground & Polished	Cold Drawn, Center less Ground and Polished (Strain Hardened)
Grades	201, 202, 303, 304, 304L, 310, 316, 316L, 321, 410, 420, 416, 430, 431, 430F, & others		304, 304L, 316, 316L
Diameter (Size)	2mm to 5 mm (1/8" to 3/16")	6mm to 22m (1/4" to 7/8")	10mm to 40mm (3/8" to 1-1/2")
Diameter Tolerance	h8 / h9 (Din 671), hy11 ASTM A 484 / A 479 / A 276	h9 (Din 671) ASTM A484 / A479 / A276	h9 (Din 671), h11 ASTM A 484 / A 479 / A 276
Length	3/4/5, 6/6 meter (12/14ft/20 feet)	3/4/5, 6/6 meter (12/14ft/20 feet)	3/4/5, 6/6 meter (12/14/20 feet)
Length Tolerance	-0/+200 mm of +100mm or +50mm (-0"/+1 feet or +4" or 2")	-0/+200 mm or +100mm or +50mm (-0"/+1 feet or +4" or 2")	-0/+200mm (-0"/+1 feet)



Stainless Steel Hexagon & Square Bars

Type	Cold Drawn and Polished (Squares)	Cold Drawn and Polished (Hexagons)
Grades	304, 304L, 316, 316L	304, 304L, 316, 316L
Diameter	3mm to 40 mm (1/4" to 1-1/2")	10mm to 40 mm (3/8" to 1-1/2")
Diameter	h11	h11
Tolerance	(ASTM A 484 / A 479 / A 276)	(ASTM A 484 / A 479 / A 276)
Length	3/4/6 meter (12/14ft/20 feet)	3/4/6 meter (12/14ft/20 feet)
Length Tolerance	-0/+500mm (-0"/+2 feet)	-0/+500 mm or +100mm or +50mm (-0"/+2 feet)

Stainless Steel Cold Heading Wires

Condition	Cold drawn, Annealed and Pickled
Diameter	1.6 mm to 17 mm (1/16" to 11/16")
Tensile Strength	65kg / mm2 max
Packing	HDPE wrapped coils of 300kg to 500kg
Grades	202, 304, 304L, 316, 316L, 304HC, 302HQ



Seamless & ERW Pipes

Stainless Steel: ASTM A312 TP 304/304L/304H/316/316L/317/317L/321/310/347/904L etc.

Carbon Steel: ASTM A53 GR. B/ A106 GR. B/ API 5L GRADE B/ API 5L GR.X42/46/52/56/ 60/65/70/ A333 GR. 3/ GR. 6, etc.

Alloy Steel: ASTM A335 GR. P1/P5/P9/P11/P22/P91, etc.

Type: Round pipe, Square Pipe, Rectangular Pipe, Oval Pipe, Half Round Pipe, etc.,

Value Added Services

Internally and externally polished tube is ideal for the dairy, food & beverage industries where highest degree of purity and cleanliness is essential, with this process we can achieve the required surface finish after mechanical polishing, we can further improve for Bio Pharma industries by Electro polishing.

Each tube is externally polished with single head semi automatic polishing machine to attend the required polishing.

SPECIFICATIONS:

MATERIAL: 304/316L, SEMI-WELDED or SEAMLESS STAINLESS STEEL TUBE

Material : ASTM 304, 304L, 316 & 316L

Spec : ASTM A249, A269, A270

Roughness : Can achieve various grits as per client request.

- 1) ID/OD Polished to 180 Grit (Ra \leq 0.8 μ m)
- 2) ID/OD Polished to 240 Grit (Ra \leq 0.6 μ m)
- 3) ID/OD Polished to 320 Grit (Ra \leq 0.5 μ m)
- 4) ID/OD Polished 420 Grit (Ra \leq 0.4 μ m)

Tube & Pipe

EN 10217-7 Welded steel tubes for pressure purpose. - Stainless Steels

EN 10296-2 Welded steel tubes for construction purposes. - Stainless Steels

ASTM A249 Welded austenitic steel boiler, super heater, heat exchanger and condenser tubes

ASTM A269 Seamless and welded austenitic stainless steel tubing for general service.

ASTM A270 Seamless and welded austenitic stainless steel sanitary tubing

ASTM A312 Electric fusion-welded austenitic steel pipe

ASTM A358 Electric fusion-welded austenitic CrNi alloy steel pipe for high temperature

ASTM A789 Seamless and welded duplex stainless steel tubing for general service

ASTM A790 Seamless and welded duplex stainless steel pipe

ASTM A928 Duplex stainless and welded with addition of filler metal.



CHEMICAL COMPOSITION OF STAINLESS STEEL

Grade	Chemical Composition										Nearest Equivalent Specification	
	C Max	Mn Max	P Max	S Max	Si Max	Cr	Ni	Mo	Other Element	I.S.	En	
201	0.15	5.5/7.5	0.06	0.03	16.0/18.0	3.5/5.5	-	-	-	-	-	-
202	0.15	7.5/10	0.06	0.03	1	17.0/19.0	4.0/6.0	-	-	-	-	-
301	0.15	2.0max	0.045	0.040	1.0	16.0/18.0	6.0/8.0	-	-	-	10Cr17Ni7	-
302	0.15	2.0	0.045	0.030	1.0	17.0/19.0	8.0/10.0	-	-	E-4-3-4%	07Cr18Ni9	En-58A
302HQ	0.03	2.0	0.045	0.03	1	17.0/19.0	9.0/10.0	-	-	CU:3-4.0	-	-
303	0.15	2.0	0.045	0.15min	1.0	17.0/19.0	8.0/10.0	-	-	E-4-1 % max	15Cr18Ni9	En-58M
303EHS	0.15	2.0	0.02	0.3-0.33	1	17.0/19.0	8.0/10.0	-	CU:1%Max	-	-	-
304	0.08	2.0	0.045	0.030	1.0	18.0/20.0	8.0/10.0	-	-	-	04Cr18Ni10	En-58E
304L	0.030	2.0	0.045	0.030	1.0	18.0/20.0	8.0/12.0	-	-	-	02Cr18Ni11	-
304H.C	0.05	2.0	0.045	0.03	1	18.0/20.0	8.5/9.5	-	-	CU:2-2.50	-	-
308	0.08	2.0	0.040	0.030	1.0	18.0/21.0	10.0/2.0	-	-	-	-	-
308L	0.02	1.5/2.0	0.025	0.02	0.5	19.0/21.0	9.5/11.0	-	-	-	-	-
309	0.20	2.0max	0.045	0.030	1.0	22.0/24.0	12.0/15.0	-	-	-	20Cr24Ni12	-
309S	0.08	2.0	0.045	0.030	1.0	22.0/24.0	12.0/15.0	-	-	-	-	-
310	0.25	2.0	0.045	0.030	1.50	24.0/26.0	19.0/22.0	-	-	-	10Cr25Ni12	-
310S	0.08	2.0	0.045	0.030	1.50	24.0/26.0	19.0/22.0	-	-	-	-	-
314	0.25	2.0	0.040	0.030	1.5to3	25.0/26.0	19.0/22.0	-	-	-	-	-
316	0.08	2.0	0.045	0.030	1.0	16.0/18.0	10.0/14.0	2.0/3.0	-	-	04Cr17Ni12Mo2	En 58H
316L	0.030	2.0	0.045	0.030	1.0	16.0/18.0	10.0/14.0	2.0/3.0	-	-	03Cr17Ni12Mo2	-
316TI	0.080	2.0	0.045	0.030	1.0	16.0/18.0	10.0/14.0	2.0/3.0	Ti5xCmin	-	-	-
317	0.08	2.0	0.045	0.030	1.0	18.0/20.0	11.0/15.0	3.0/4.0	-	-	-	-
317L	0.030	2.0	0.045	0.030	1.0	18.0/20.0	11.0/15.0	3.0/4.0	N:0.10/0.22	-	-	-
317 LN	0.03	2.0	0.045	0.03	1	18.0/20.0	11.0/15.0	3.0/4.0	N:0.1 0/0.22	-	-	-
321	0.08	2.0	0.045	0.030	1.0	17.0/19.0	9.0/12.0	Ti5xCmin	04Cr18Ni1 OTi20	-	En-58C	-
347	0.08	2.0	0.045	0.030	1.0	17.0/19.0	9.0/12.0	Nb1Ta10xCmi	04Cr18Ni10Nb-40	-	En-58G	-
904 L	0.02	2.0	0.045	0.035	1	19.0/23.0	23.0/28.0	4.0-5.0	CU:1-2	-	-	-
FERRITIC												
410	0.15	1.00	0.04	0.03	1.0	11.50/13	0.60	12Cr13	-	En-56A	-	-
416	0.15	1.25	0.06	0.15min	1.0	12.0/14.0	1.25/2.50	-	-	-	-	-
420	0.15mi	1.0	0.04	0.03	1.0	12.0/14.0	0.60	En-56C&D	-	-	-	-
430	0.12	1.0	0.04	0.03	1.0	16.0/18.0	0.60	-	-	-	07Cr17	En-60
430L	0.03	1.0	0.04	0.03	1.0	16.0/18.0	0.60	-	-	-	-	-
430F	0.12	1.25	0.06	0.15min	1.0	16.0/18.0	0.60	-	-	-	-	En-57
431	0.2	1.0	0.04	0.03	1.0	15.0/17.0	1.25/2.5	-	-	-	-	En-57
15.5-PH	0.07	1.0	0.04	0.03	1.0	14.0/15.50	3.5/5.5	-	-	NB:0.15/0.45	-	-
17.4-PH	0.07	1.0	0.04	0.03	1.0	15.0/17.0	3.0/5.0	-	-	NB:0.15/0.45	-	-
DUPLEX												
1905	0.03	1.2/1.8	0.04	0.03	1.2/2	18.0/19.0	4.3/5.2	2.5/3	N:5/0.10	-	-	-
2205	0.03	2	0.03	0.02	1.0	21.0/23.0	4.5/6.5	2.5/3.5	N:8/0.20	-	-	-
2506	0.08	1.0	0.04	0.03	0.75	26.0/28.0	4/5	1.3/2	-	-	-	-

USA AISINO	GERMANY DIN	INDIA IS	BRITAIN BS	JAPAN JIS	SWEDEN SIS	FRANCE AFNOR	ITALY UNI	CHINA GB	USN DESIGNATION
303	1.4305	X10Cr18Ni98	303831	8U8303	-	Z10CNF18.09	X10CrNi81809	-	830300
304	1.4301	X04Cr19Ni9	304815	8U8304	14 23 33	Z6CNI18.09	X5CrNi1810	OCr19Ni9	830400
304L	1.4306	X02Cr19Ni10	304811	8U8304L	142352	Z2CNI18.10	X2CrNi1811	00Cr19Ni11	830403
310	1.4845	X20Cr25Ni20	310824	8U83108	142361	Z12CNI25.20	X22CrNi2520	OCr25Ni20	831008
316	1.4401	X04Cr17Ni12Mo2	316831	8U8316	142347	Z6CND17.11	X8CrNiMo1713	OCr17Ni12Mo2	831600
316L	1.4404	X02Cr17Ni12Mo2	316811	8U8316L	142348	Z2CND17.12	X2CrNiMo1712	00Cr17Ni14Mo2	831603
321	1.4541	X04Cr18Ni10Ti	321831	8U8321	142337	Z6CNT18.12	X6CrNiTi1811	OCr18Ni9Ti	832100



STAINLESS STEEL PIPE DIMENSION AS PER ASTM AND WEIGHT-KG. PER MTR. (ANSI B 36.19-1965)

Nominal Bore		Outside Diameter	Schedule 5S		Schedule 10S		Schedule 40S		Schedule 80S		Schedule 160S		Schedule XXS	
mm	INCH	mm	Wt. mm	Weight (kg/ml)	Wt. mm	Weight (kg/ml)	Wt. mm	Weight (kg/ml)	Wt. mm	Weight (kg/ml)	Wt. mm	Weight (kg/ml)	Wt. mm	Weight (kg/ml)
3	1/8	10.3	1.24	0.276	1.24	0.28	1.73	0.37	2.41	0.47	-	-	-	-
6	1/4	13.7	1.24	0.390	1.65	0.49	2.24	0.631	3.02	0.80	-	-	-	-
10	3/8	17.1	1.24	0.490	1.65	0.63	2.31	0.845	3.20	1.10	-	-	-	-
15	1/2	21.3	1.65	0.800	2.11	1.00	2.77	1.27	3.75	1.62	4.75	1.94	7.47	2.55
20	3/4	26.7	1.65	1.03	2.11	1.28	2.87	1.68	3.91	2.20	5.54	2.89	7.82	3.63
25	1	33.4	1.65	1.30	2.77	2.09	3.38	2.50	4.55	3.24	6.35	4.24	9.09	5.45
32	1.1/4	42.2	1.65	1.65	2.77	2.70	3.56	3.38	4.85	4.47	6.35	5.61	9.70	7.77
40	1.1/2	48.3	1.65	1.91	2.77	3.11	3.68	4.05	5.08	5.41	7.14	7.25	10.16	9.54
50	2	60.3	1.6	2.40	2.77	3.93	3.91	5.44	5.54	7.48	8.74	11.1	11.07	13.44
65	2.1/2	73.0	2.11	3.69	3.05	5.26	5.16	8.63	7.01	11.4	9.53	14.9	14.2	20.39
80	3	88.9	2.11	4.51	3.05	6.45	5.49	11.30	7.62	15.2	11.1	21.3	15.24	27.65
100	4	114.3	2.11	5.84	3.05	8.36	6.02	16.07	8.56	22.3	13.49	33.54	17.12	41.03
125	5	141.3	2.77	9.47	3.40	11.57	6.55	21.8	9.53	31.97	15.88	49.11	19.05	57.43
150	6	168.3	2.77	11.32	3.40	13.84	7.11	28.3	10.97	42.7	18.2	67.56	21.95	79.22
200	8	219.1	2.77	14.79	3.76	19.96	8.18	42.6	12.7	64.6	23.0	111.2	22.23	107.8
250	10	273.1	3.40	22.63	4.19	27.78	9.27	60.5	12.7	96.0	28.6	172.4	25.40	155.15
300	12	323.9	3.96	31.25	4.57	36.00	9.52	73.88	12.7	132.0	33.32	238.76	25.40	186.97
350	14	355.6	3.96	34.36	4.78	41.3	11.13	94.59	19.05	158.08	35.71	281.70	-	-
400	16	406.4	4.19	41.56	4.78	47.29	12.7	123.30	21.41	203.33	40.46	365.11	-	-
450	18	457.2	4.19	46.80	4.78	53.42	14.27	155.80	23.8	254.36	45.71	466.40	-	-
500	20	508.0	4.78	59.25	5.54	68.71	15.09	183.42	26.19	311.2	49.99	564.68	-	-
600	24	609.6	5.54	82.47	6.35	94.45	17.48	255.41	30.96	442.08	59.54	808.22	-	-
650	26	660.4			7.92	129.40	9.53	155.32	12.70	205.97	-	-	-	-
700	28	711.2			7.92	139.47	9.53	167.44	12.70	222.13	-	-	-	-
750	30	762.0	6.35	120.15	7.92	149.55	9.53	179.56	12.70	238.28	-	-	-	-
800	32	812.8	-	-	7.92	159.62	9.53	191.69	12.70	254.44	-	-	-	-
850	34	863.6	-	-	7.92	169.64	9.53	203.74	12.70	270.50	-	-	-	-
900	36	914.4	-	-	7.92	179.77	9.53	215.93	12.70	286.75	-	-	-	-



MACROTECH

STEEL INDUSTRIES

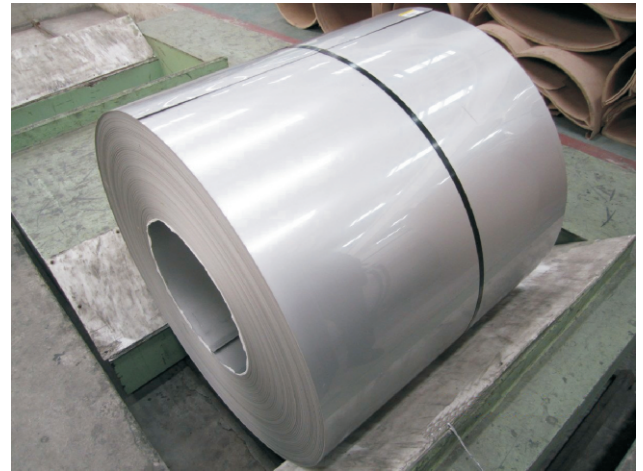
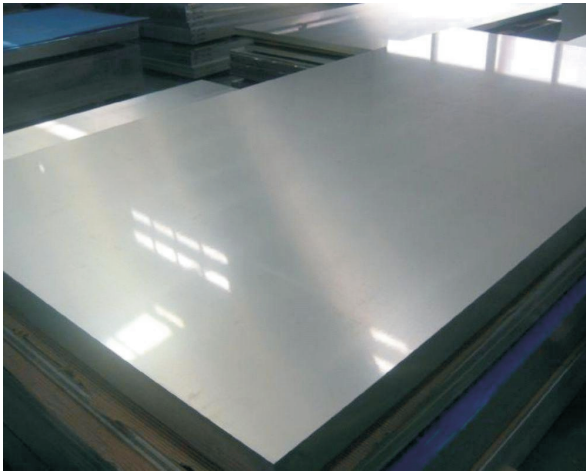
VINAY TIWARI

+91-83698 64458

BABU SOLANKI

+91-98198 50578

Email : macrotechsteel@gmail.com



Sheets & Plates

Material Grade : Stainless Steel, Nickel Alloys, Carbon Steel, Alloy Steel, Copper, Brass, Aluminium, Cu-Ni etc. IBR Non IBR.

Grades : 904^G, 309S, 310H^G, 316Ti^G, 317L, 317LN^G, 321, 321H, 405, 410, 410S, 429^G, 430, 439, 409L.

Duplex & Super Duplex : S31803, S32750, S32760

Stainless Steel Sheets & Plates as per ASTM A 240 Gr. TP 304, 304L, 304H, 304LH, 309, 309S, 309H, 310S, 310H, 316, 316L, 316H, 316LN, 316Ti, 317, 317L, 321, 321H, 347, 347H, 348, 348H, 409, 410, 420, 430, 904L.

Alloy steel Plates as per ASTM A 387 Gr. 2, 5, 9, 11, 12 & 22 in class 1 & 2; ASTM A 204 Gr. A & B, DIN 17175 Gr. 15Mo3 & 16M03 with IBR Test Certificate.

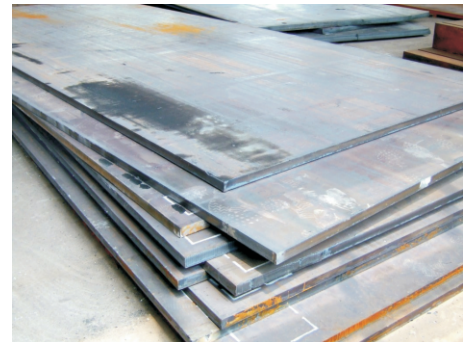
Carbon Steel / Boiler Quality Plates as per IS 2062 Gr. A, B & C, IS 2002 Gr. 1 & 2, ASTM A 516 Gr. 60 & 70, ASTM A 515 Gr. 70.

Others : Monel, Nickel, Inconel, Hastalloy, Copper, Brass, Bronze, Titanium, Tantalum, Bismuth, Aluminium, High Speed Steel, Zinc, Lead, etc.

FORMULA

Weight of S.S. Sheets & Plates

Length (Mtrs) x Width (Mtrs.) x Thick (mm) x 8 = Kg. Per Sheet
Length (Ft) x Width (Ft) x Thick (mm) x 3/4 = Kg. Per Sheet





Butt-Weld Fittings

Stainless Steel : ASTM A403 WP 304 / 304L / 304H / 316 / 316L / 317 / 317L / 321 / 310 / 347 / 904L, etc.

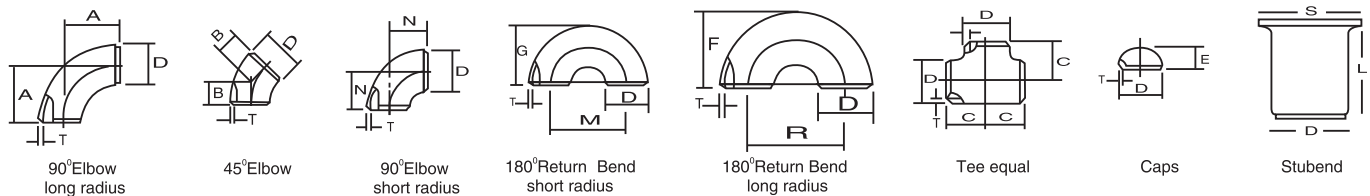
Carbon Steel : ASTM A234 WPB / A420 WPL3 / A420 WPL6 / MSS-SP-75 WPHY 42/46/52/56/60/65/70.

Alloy Steel : ASTM A234 WP1/WP5/WP9/WP11/WP22/WP91, etc.

Others : Monel, Nickel, Inconel, Hastalloy, Copper, Brass, Bronze, Titanium, Tantalum, Bismuth, Aluminium, High Speed Steel, Zinc, Lead, Duplex Steel, cupro Nickel, Alloy 20, Niro 82 & XM 19.

Types : Elbow, Tee, Reducer, Return Bends, Stub-Ends, Cap, Collar, Cross, Insert, Long Bend, Y Piece, Mitter Bend, U Bend, Bend, 45°C, 90°, 1.5 D, 3D.

BUTT WELDING PIPE FITTING DIMENSIONAL STANDARD ANSI B-16.9 / 16.28 / MSS SP-43

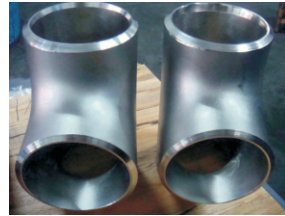
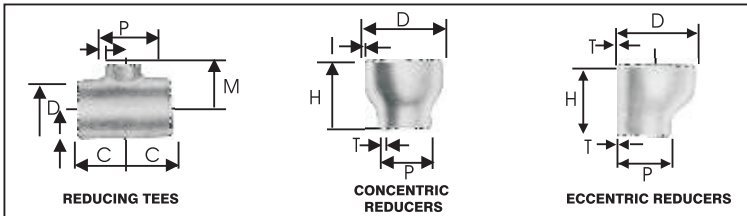


Nominal Pipe Size		Outside Diameter	Center to Face				Back to Face			Center to Center			Length 'L'	
Inch.	mm	D	A	B	C	N	E	F	G	R	M	S	MSS SP43	ANSI B 16.9
1/2	15	21.3	38	16	25	—	25	48	—	76	—	34.9	50.8	76.2
3/4	20	26.7	29	11	29	—	25	43	—	57	—	42.8	50.8	76.2
1	25	33.4	38	22	38	25	38	56	41	76	51	50.8	50.8	101.6
1 1/4	32	42.2	48	25	48	32	38	70	52	95	64	63.5	50.8	101.6
1 1/2	40	48.3	57	29	57	38	38	83	62	114	76	73.0	50.8	101.6
2	50	60.3	76	35	64	51	38	106	81	152	102	92.0	63.5	152.4
2 1/2	65	73.0	95	44	76	64	38	132	100	191	127	104.8	63.5	152.4
3	80	88.9	114	51	86	76	51	159	121	229	152	127.0	63.5	152.4
3 1/2	90	101.6	133	57	95	89	64	184	140	267	178	139.7	76.2	152.4
4	100	114.3	152	64	105	102	64	210	159	305	203	157.2	76.2	152.4
5	125	141.3	190	79	124	127	76	262	197	381	254	185.7	76.2	203.2
6	150	168.3	229	95	143	152	89	313	237	457	305	215.9	88.9	203.2
8	200	219.1	305	127	178	203	102	414	313	610	406	270.0	101.6	203.2
10	250	273.1	381	159	216	254	127	518	391	762	508	324.0	127.0	254.0
12	300	323.9	457	190	254	305	152	619	467	914	610	381.0	152.4	254.0
14	350	355.6	533	222	279	356	165	711	533	1067	711	412.8	152.4	305.0
16	400	406.4	610	254	305	406	178	813	610	1219	813	470.0	152.4	305.0
18	450	457.2	686	286	343	457	203	914	686	1372	914	533.4	152.4	305.0
20	500	508.0	762	318	381	508	229	1016	762	1524	1016	584.2	152.4	305.0
22	550	559.0	838	343	419	559	254	1118	838	1676	1118	614.4	152.4	305.0
24	600	610.0	914	381	432	610	267	1219	914	1829	1219	692.2	152.4	305.0
26	650	660.0	991	406	495	660	267							
28	700	711.0	1067	438	521	711	267							
30	750	762.0	1143	470	559	762	267							
32	800	813.0	1219	502	597	813	267							
34	850	864.0	1295	533	635	864	267							
36	900	914.0	1372	565	673	914	267							





BUTT - WELDING PIPE FITTINGS ANSI B 16.9 / 16.28



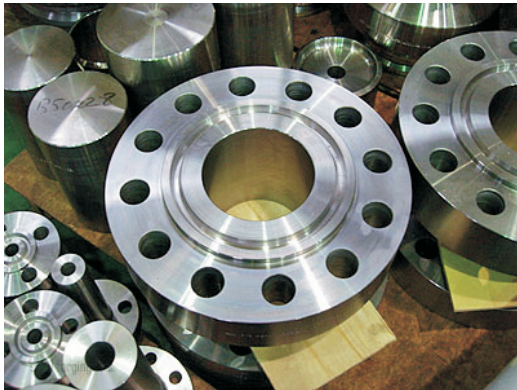
Nominal Pipe Size		Outside Diameter		Center to End		Length
Inch.	mm	D	P	C	M	H
1/2 x 3/8	15 x 10	21.3	17.1	25	25	-
1/2 x 1/4	15 x 8	21.3	13.7	25	25	-
3/4 x 1/2	20 x 15	26.7	21.3	29	29	38
3/4 x 3/8	20 x 10	26.7	17.1	29	29	38
1 x 3/4	25 x 20	33.4	26.7	38	38	51
1 x 1/2	25 x 15	33.4	21.3	38	38	51
1 1/4 x 1	32 x 25	42.2	33.4	48	48	51
1 1/4 x 3/4	32 x 20	42.2	26.7	48	48	51
1 1/4 x 1/2	32 x 15	42.2	21.3	48	48	51
1 1/2 x 1 1/2	40 x 32	48.3	42.2	57	57	64
1 1/2 x 1	40 x 25	48.3	33.4	57	57	64
1 1/2 x 3/4	40 x 20	48.3	26.7	57	57	64
1 1/2 x 1/2	40 x 15	48.3	21.3	57	57	64
2 x 1 1/2	50 x 40	60.3	48.2	64	60	76
2 x 1 1/4	50 x 32	60.3	42.2	64	57	76
2 x 1	50 x 25	60.3	33.4	64	51	76
2 x 3/4	50 x 20	60.3	26.7	64	44	76
2 1/2 x 2	65 x 50	73.0	60.3	76	70	89
2 1/2 x 1 1/2	65 x 40	73.0	48.3	76	67	89
2 1/2 x 1 1/4	65 x 32	73.0	42.2	76	64	89
2 1/2 x 1	65 x 25	73.0	33.4	76	57	89
3 x 2 1/2	80 x 65	88.9	73.0	86	83	89
3 x 2	80 x 50	88.9	60.3	86	76	89
3 x 1 1/2	80 x 40	88.9	48.3	86	73	89
3 x 1 1/4	80 x 32	88.9	42.2	86	70	89
3 1/2 x 3	90 x 80	101.6	88.9	95	92	102
3 1/2 x 2 1/2	90 x 65	101.6	73.0	95	89	102
3 1/2 x 2	90 x 50	101.6	60.3	95	83	102
3 1/2 x 1 1/2	90 x 40	101.6	48.3	95	79	102
3 1/2 x 1 1/4	90 x 32	101.6	42.2	-	-	102
4 x 3 1/2	100 x 90	114.3	101.6	105	102	102
4 x 3	100 x 80	114.3	88.9	105	98	102
4 x 2 1/2	100 x 65	114.3	73.0	105	95	102
4 x 2	100 x 50	114.3	60.3	105	89	102
4 x 1 1/2	100 x 40	114.3	48.3	105	86	102
5 x 4	125 x 100	141.3	114.3	124	117	127
5 x 3 1/2	125 x 90	141.3	101.6	124	114	127
5 x 3	125 x 80	141.3	88.9	124	111	127
5 x 2 1/2	125 x 65	141.3	73.0	124	108	127
5 x 2	125 x 50	141.3	60.3	124	105	127
6 x 5	150 x 125	168.3	141.3	143	137	140
6 x 4	150 x 100	168.3	114.3	143	130	140
6 x 3 1/2	150 x 90	168.3	101.6	143	127	140
6 x 3	150 x 80	168.3	88.9	143	124	140
6 x 2 1/2	150 x 65	168.3	73.0	143	121	140

Nominal Pipe Size		Outside Diameter		Center to End		Length
Inch.	mm	D	P	C	M	H
8 x 6	200x150	219.1	168.3	178	168	152
8 x 5	200 x 125	219.1	141.3	178	162	152
8 x 4	200 x 100	219.1	114.3	178	156	152
8 x 3 1/2	200 x 90	219.1	101.6	178	152	152
10 x 8	250 x 200	273.1	219.1	216	203	178
10 x 6	250 x 150	273.1	168.1	216	194	178
10 x 5	250 x 125	273.1	141.3	216	191	178
10 x 4	250 x 100	273.1	114.3	216	184	178
12 x 10	300 x 250	323.9	273.1	254	241	203
12 x 8	300 x 200	323.9	219.1	254	229	203
12 x 6	300 x 150	323.9	168.3	254	219	203
12 x 5	300 x 125	323.9	141.3	254	216	203
14 x 12	350 x 300	355.6	323.9	279	270	330
14 x 10	350 x 250	355.6	273.1	279	257	330
14 x 8	350 x 200	355.6	219.1	279	248	330
14 x 6	350 x 150	355.6	168.3	279	238	330
16 x 14	400 x 350	406.4	355.6	305	305	356
16 x 12	400 x 300	406.4	323.9	305	295	356
16 x 10	400 x 250	406.4	273.1	305	283	356
16 x 8	400 x 200	406.4	219.1	305	273	356
16 x 6	400 x 150	406.4	168.3	305	264	356
18 x 16	450 x 400	457.0	406.4	343	330	381
18 x 14	450 x 350	457.0	355.6	343	330	381
18 x 12	450 x 300	457.0	323.9	343	321	381
18 x 10	450 x 250	457.0	273.1	343	308	381
18 x 8	450 x 200	457.0	219.1	343	298	381
20 x 18	500 x 450	508.0	457.0	381	368	508
20 x 16	500 x 400	508.0	406.4	381	356	508
20 x 14	500 x 350	508.0	355.6	381	356	508
20 x 12	500 x 300	508.0	323.9	381	346	508
20 x 10	500 x 250	508.0	273.1	381	333	508
20 x 8	500 x 200	508.0	219.1	381	324	508
22 x 20	550 x 500	559.0	508.0	419	406	508
22 x 18	550 x 450	559.0	457.0	419	394	508
22 x 16	550 x 400	559.0	406.4	419	381	508
22 x 14	550 x 350	559.0	355.6	419	381	508
22 x 12	550 x 300	559.0	323.9	419	371	508
24 x 10	550 x 250	559.0	273.1	419	359	508
24 x 22	600 x 550	610.0	559.0	432	432	508
24 x 20	600 x 500	610.0	508.0	432	432	508
24 x 18	600 x 450	610.0	457.0	432	419	508
24 x 16	600 x 400	610.0	406.4	432	406	508
24 x 14	600 x 350	610.0	355.6	432	406	508
24 x 12	600 x 300	610.0	323.9	432	397	508
24 x 10	600 x 250	610.0	273.1	432	384	508



MACROTECH STEEL INDUSTRIES

VINAY TIWARI
+91-83698 64458
BABU SOLANKI
+91-98198 50578
Email : macrotechsteel@gmail.com



Flanges

Stainless Steel : ASTM A 182 F304/304L/304H/316/316L/317/317L/321/310/347/904L, etc.

Carbon Steel : ASTM A105/A694 F42/46/52/60/60/65/70/A350 LF3/A350 LF2, etc.

Alloy Steel : ASTM A182 F1/F5/F9/F11/F22/F91, etc.

Duplex Steel : 2205 (Duplex), 2507 (Super Duplex) UNS - 31803, 32750, 32990

Others : Monel, Nickel, Inconel, Hastalloy, Copper, Brass, Bronze, Titanium, Tantalum, Bismuth, Aluminium, High Speed Steel, Zinc, Lead, etc.

Types : Weldneck, Slipon, Blind, Socket Weld, Lap Joint, Spectacles, Ring Joint, Orifice, Long Weldneck, Deck Flange, etc.

Size : 1/8" NB to 48" NB

Class : 150#, 300#, 400#, 600# 900#, 1500# & 2500# also as per the National & International Standard.

Flanges such as SORF, SOFF, SOLJ, SWRF, SWFF, WNRF, WNFF, WNRTJ, LWNRF, BLRF, BLFF, BLRTJ, Threaded, Spectacle Blind, Orifice & Studding Outlet are manufactured according to ANSI B 16.5, B 16.47 Series A (MSS SP-44), B 16.47 Series B (API 605), MSS SP-43, DIN 2527, DIN 2566, DIN 2576, DIN 2632, DIN 2633, DIN 2634, DIN 2635, DIN 2642, BS 10, IS 1538 & IS 6392, etc.





MACROTECH STEEL INDUSTRIES

VINAY TIWARI
+91-83698 64458
BABU SOLANKI
+91-98198 50578
Email : macrotechsteel@gmail.com



Forged & Ferrule Fittings

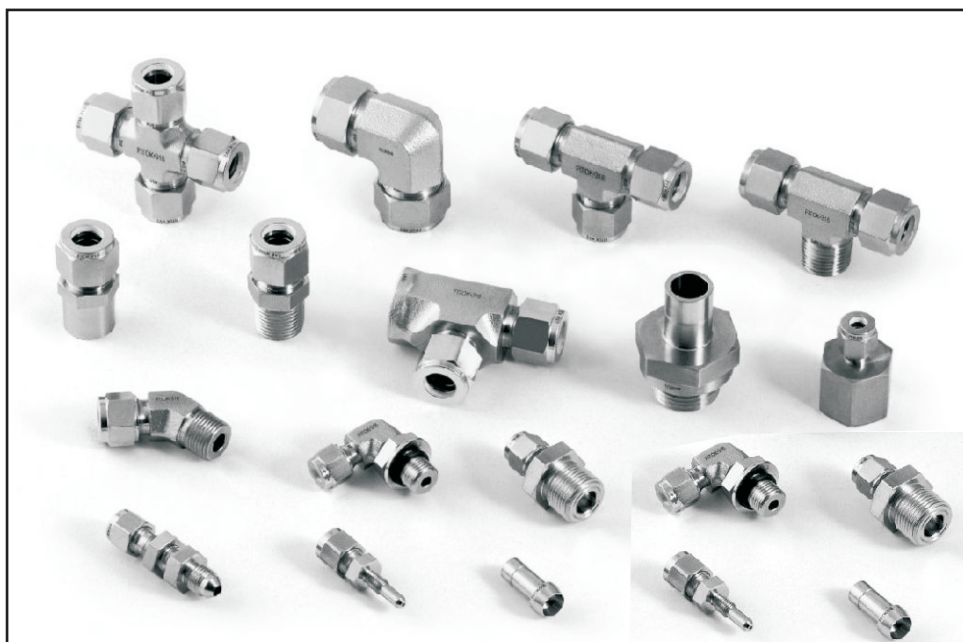
Stainless Steel : ASTM A182 F304/304L/304H/316/316L, 317/317L/321/310/347/904L etc.

Carbon Steel : ASTM A105/A694 F42/46/52/56/60/65/70/A350 LF3/A350, Lf2.

Alloy Steel : ASTM A182 F1/F5/F9/F11/F22/F91, etc.

Others : Monel, Nickel, Inconel, Hastalloy, Copper, Brass, Bronze, Titanium, Tantalum, Bismuth, Aluminium, High Speed Steel, Zinc, Lead, etc.

Such as Elbows, Equal/Unequal Tees, Concentric / Eccentric Reducers, Full/Half Couplings, Reducing Couplings, Caps, Cross, Unions, Hex / Reducing / Flash Bushings, Plugs, Nipples, Swage Nipples, Concentric / Eccentric Swages, Reducer Inserts, Boss, Laterals, Street Elbows & Outlets / Branch Connection (Weldolets, Threadolets, Sockolets, Flexolets, Laterolets, Elbolets, Sweepolets, Insert Weldolets, Nippolets, Brazolets, Coupolets) are manufactured according to ANSI B 16.11, BS 3799, MSS SP-79 & MSS SP - 95, etc.





17-4 PH /15-5 PH ROUND BARS



17-4 PH / 15-5 PH is a martensitic precipitation-hardening stainless steel that provides high strength, good corrosion resistance, good mechanical properties at temperatures up to 600°F (316°C) and good toughness in both the longitudinal and transverse directions in both base metal and welds. Short-time, low-temperature heat treatments minimize distortion and scaling. It may be used in the solution treated condition or heat treated to obtain a wide variety of properties.

APPLICATIONS : Both alloys are widely used in the Aerospace, Chemical, Petrochemical, Food Processing, Paper and General Metal Working Industries...etc.



MECHANICAL PROPERTIES

17-4 PH ROUND BAR

Property	A	H 900	H 925	H 1025	H 1075	H 1150
UTS, ksi	160	210	200	185	175	160
(MPa)	(1103)	(1448)	(1379)	(1276)	(1207)	(1103)
0.2% YS, ksi	145	200	195	170	165	150
(MPa)	(1000)	(1379)	(1345)	(1172)	(1148)	(1034)
Elongation, % in 2" (50.8 mm)	5.0	7.0	8.0	8.0	8.0	11.0
Hardness, Rockwell	C35	C45	C43	C38	C37	C35

15-5 PH ROUND BAR

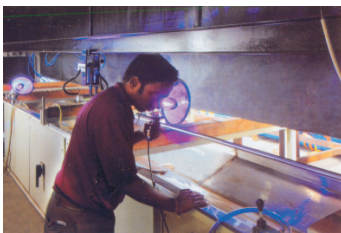
Property	A	H 900	H 925	H 1025	H 1075	H 1150
UTS, ksi (MPa) Longitudinal	161	209	181	174	162	150
	(1110)	(1438)	(1249)	(1200)	(1114)	(1035)
Transverse	162	213	184	175	162	152
	(1116)	(1466)	(1272)	(1204)	(1114)	(1050)
	(988)	(1393)	(1222)	(1176)	(1112)	(1009)
Elongation, % in 2" (50.8 mm) Longitudinal	8.4	10.1	12.2	12.2	12.8	14.6
Transverse	7.6	9.4	9.8	9.3	11.4	13.1
Hardness, Rockwell C						
Longitudinal	35	46	41	40	38	36
Transverse	35	46	42	39	38	36



FORMULAE

- 1) WEIGHT OF STAINLESS STEEL PIPES & TUBES
 $OD (mm) - W.T. (mm) \times W.T. (mm) \times 0.02466 = Kg. \text{ per Mtr.}$
- 2) SHEET WIDTH REQUIRED FOR ROLLED AND WELDED PIPES
 $O.D. (mm) - THK (mm) \times 3.14 = \text{Sheet Width}$
- 3) WEIGHT OF STAINLESS STEEL SHEETS
 $\text{Length (mtr.)} \times \text{Wdth (mtr.)} \times \text{Thk (mm)} \times 8 = \text{Kg Per Sheet}$
- 4) WEIGHT OF STAINLESS STEEL CIRCLE & BLANKS
 $O.D. (mm) \times O.D.> (mm) \times \text{Thk (mm)} / 160/1000 = \text{Kg Per Pcs.}$
- 5) WEIGHT OF STAINLESS STEEL ROUNDS
 $\text{Dia. (mm)} \times \text{Dia. (mm)} \times 0.00623 = \text{Per Mtr.}$
- 6) WEIGHT OF STAINLESS STEEL HEXAGONAL RODS
 $\text{Dia. (mm)} \times \text{Dia. (mm)} \times 0.00679 = \text{Per Mtr.}$
- 7) WEIGHT OF STAINLESS STEEL SQUARE BARS
 $\text{Dia. (mm)} \times \text{Dia. (mm)} \times 0.00787 = \text{Kg Per Mtr.}$
- 8) WEIGHT OF CARBON STEEL PIPES & TUBES
 $O.D. (mm) - W.T. (mm) \times W.T. (mm) \times 0.02466 = \text{Kg. Per Mtr.}$
- 9) WEIGHT OF CARBON STEEL SHEETS - PLATES
 $\text{Length (mtr.)} \times \text{Width (mtr.)} \times \text{Thk (mm)} \times 7.85 = \text{Kg. Per Sheet}$
- 10) WEIGHT OF COPPER PIPES
 $O.D. (mm) - W.T. (mm) \times W.T. (mm) \times 0.0256 = \text{Kg. Per Mtr.}$
- 11) WEIGHT OF LEAD PIPES (approx.)
 $O.D. (mm) - W.T. (mm) \times W.T. (mm) \times 0.0345 = \text{Per Mtr.}$
- 12) WEIGHT OF LEAD SHEETS (approx.)
 $\text{Length (mtr.)} \times \text{Width (mtr.)} \times \text{Thk (mm)} \times 11.2 = \text{Kg. Per Sheet}$
- 13) WEIGHT OF ALLUMINIUM PIPES (approx.)
 $O.D. (mm) - W.T. (mm) \times W.T. (mm) \times 0.0082 = \text{Kg. Per Mtr.}$
- 14) WEIGTH OF ALLUMINIUM SHEETS (approx.)
 $\text{Length (mtr.)} \times \text{Width (mtr.)} \times \text{Thk (mm)} \times 2.66 = \text{Kg Per Sheet}$

THIRD PARTY INSPECTION

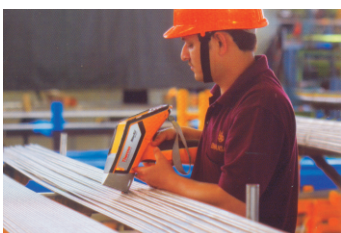


EIL, HGS, H&G, P&D, GLC, TUBOSCOPE,
VELOSI, MOODY, VETCO, IRS, BVIS, DNV, J &
HG, ABS, TCS, PDIL, TUV, etc.

NABL & Government Approved Labs



We can also supply all the materials with NABL & Government Approved Labs like :



- 1) GEO-Chem Lab
- 2) Metalurgical Services
- 3) Metallurgical Lab
- 4) TCR
- 5) Metal Analysis
- 6) Elca Lab





OUR VISION

To be a World Class Steel Mill achieving TOTAL CUSTOMER SATISFACTION through continuous improvement, innovation and new technology operational excellence supported by continuous human resource development.

To be a world class steel group committed to provide quality products and services to our customers, share our success with our employees.

We are committed to uphold integrity, competence and teamwork as the way we do our business, We also believe in being innovative, technology driven and socially responsible in our quest for excellence.

The customer is the epicenter of our business activities. We conduct our businesses with :

Integrity

We practice integrity and fairness with our customers, employees, suppliers and business associates.

Competence

We raise employees' capability to deliver products and services of the highest quality.

Teamwork

We foster teamwork, unit of purpose and mutual trust in our pursuit of prosperity for all.

Innovation

We create a congenial work environment which encourages creativity and innovation.

Technology

We utilise appropriate technology in our continuous quest for excellence.

Corporate Social Responsibility

We work towards being a good and responsible corporate citizen by incorporating social responsibilities into our business activities.



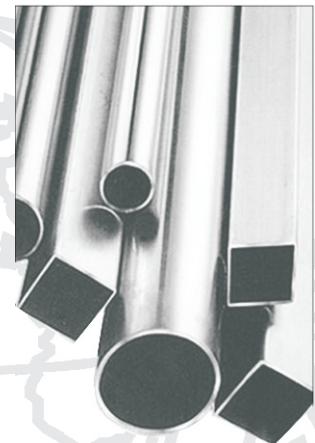
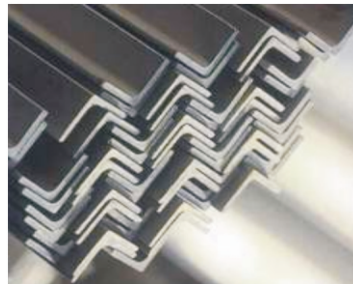
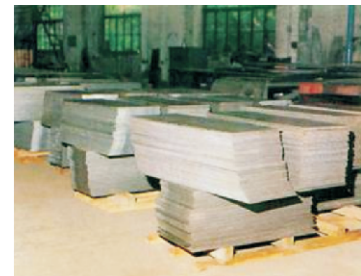
MACROTECH

STEEL INDUSTRIES

VINAY TIWARI
+91-83698 64458
BABU SOLANKI
+91-98198 50578
Email : macrotechsteel@gmail.com

PRODUCTS

- Rounds
- Bright Bars
- Wires
- Wire Rods
- Squares
- Hexagons
- Pipes
- Tubes
- Sheets
- Coils
- Plates
- Foils
- Strips
- Flats
- Channels
- Angles





MACROTECH

STEEL INDUSTRIES

VINAY TIWARI
+91-83698 64458
BABU SOLANKI
+91-98198 50578
Email : macrotechsteel@gmail.com



Regd. Address : Plot No. 12, Survey No. 158/C, 159/B, 160/B, 161/B, Kupwad, M.I.D.C. Road,
Savali Miraj, Sangli, Maharashtra - 416 416. • Email : macrotechsteel@gmail.com
Branch Office : T. K. Warehouse, Plot No. 60, Steel Market, Kalamboli, Navi Mumbai - 410 218.